


How to open a case:

Apply online: 
www.sandiegochildsupport.org

Payment Options:

Online: www.casdu.com
(Visa, MasterCard, or checking account)

Phone: 866-901-3212

Check or Money Order:
CA SDU
PO BOX 989067
West Sacramento, CA 95798

Mobile App: Available for
Android & iPhone: **CACChildSup**

Cash:



***"Enhance the lives and well-being
of children and promote family
self-sufficiency by establishing and
enforcing support orders."***

**COUNTY OF SAN DIEGO
Department of
Child Support Services**

Phone: 866-901-3212
www.sandiegochildsupport.org

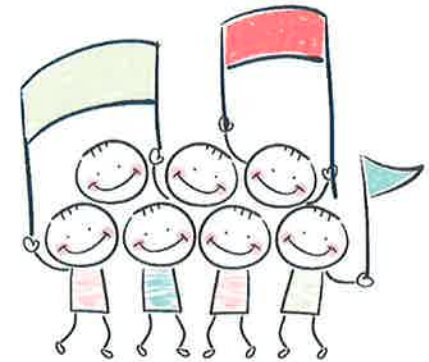
Downtown San Diego
220 W. Broadway
San Diego, CA 92101

North Inland Live Well Center
649 W Mission Ave.
Escondido, CA 92025

Family Resource Center
5055 Ruffin Road
San Diego, CA 91923

DEPARTMENT OF CHILD SUPPORT SERVICES AND YOU

Let's work together



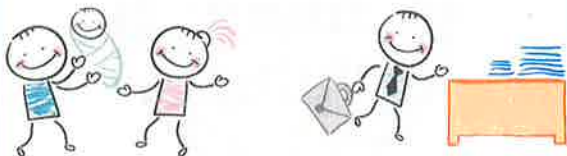
The child support program works with **parents just like you.**



We understand that not all families are the same.



Some parents come to us to establish paternity. Others need help getting a child support order or collecting on an order they already have.



We work with both moms and dads because children do better when both parents are involved, even when you are no longer together.



We can **help you in many ways.**



If the payments are not made, we ask **why?** Has there been a change of income or other circumstances?

?



Working together, we can help you **find a solution** that works for both parents.



We work with employment, parenting, and other assistance programs **to help you support your children &** promote family self-sufficiency.



COUNTY OF SAN DIEGO
HHSA
HEALTH AND HUMAN SERVICES AGENCY



LIVE WELL
SAN DIEGO



DADS
CORPS

HELPING PEOPLE HELP THEMSELVES
interfaith
community services

2-1-1
SAN DIEGO